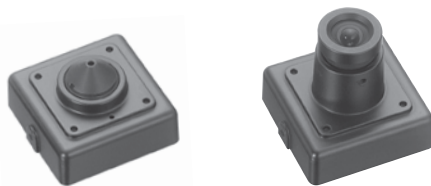


# 3G SDI MINIATURE SQUARE CAMERA

## INSTRUCTION MANUAL



※Thank you for choosing our high quality cameras.  
Before attempting to connect or operate it, please read and follow these instructions.

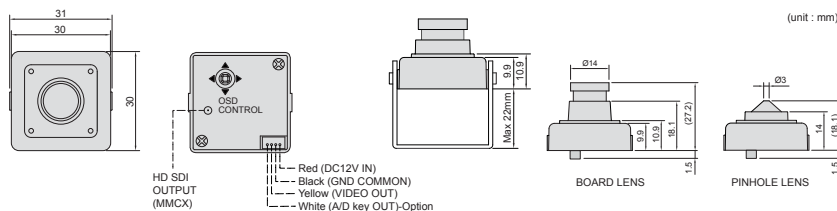
### ACCESSORIES FURNISHED

Accessories	Cable	Mounting Bracket	Screw	Instruction Manual	OSD Manual
Q' ty	1	1	4	1	1
Option	-	-	-	-	-

### SPECIFICATIONS

Camera	Image Device	1/3 Type Panasonic CMOS	
	Scanning System	Progressive Scan	
	Total Pixels	1956(H) x 1266(V) : 2.48Mega pixel	
	Effective Pixels	1944(H) x 1092(V) : 2.12Mega pixel	
	Lens	Board, Pinhole	
	Min. Illumination	0.3Lux@F2.5, 30IRE	
	Sync System	Internal	
Video	Electronic Shutter	60Hz : 1/30~1/30,000sec, 50Hz : 1/25~1/30,000sec	
	Output	HD-SDI (Max. 1080@60p), EX-SDI	
OSD	Resolution & frame rate	1080@60i/50i, 1080@60p/50p, 1080@30p/25p, 720@60p/50p, 720@30p/25p	
	On Screen Display	Built-in	
	Language	English, Chinese, Chinese(S), Japanese, Korean	
	LENS	DC/ MANUAL	
	EXPOSURE	BRIGHTNESS/ AGC/ SHUTTER MODE& SPEED/ SENS-UP	
	WHITE BALANCE	AWB/ATW/ PUSH LOCK/ MANUAL	
	BACKLIGHT	OFF/ HLC/ BLC/ WDR	
	DNR	OFF/ LOW/ MIDDLE/ HIGH	
	DAY&NIGHT	AUTO/ COLOR/ B&W	
	IMAGE	SHARPNESS/ COLOR LEVEL/ MIRROR/ FLIP/ LENS SHADING / GAMMA/ D-ZOOM/ ACE/ DEFOG	
	SPECIAL	PRIVACY/ MOTION/ DIS	
	SYSTEM	SDI OUT/ FORMAT/ FREQ/ CVBS OUT/ LANGUAGE/ CAM TITLE	
	Others	Operating Temperature	14°F~122°F (-10℃~+50℃)
		Storage Temperature	-4°F~140°F (-20℃~+60℃)
		Humidity	Less than 80%
Power Consumption		DC12V(±10%), Max.150mA	
Option	Lens		

### DIMENSIONS



### CAMERA MOUNTING POSITIONS

