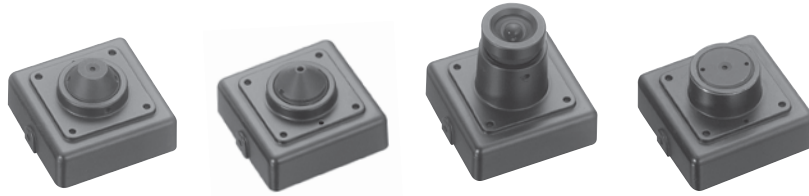


SQUARE DSP COLOUR CCD CAMERA

INSTRUCTION MANUAL



※Thank you for choosing our high quality cameras.
Before attempting to connect or operate it, please read and follow these instructions.

GENERAL

These CCD Video cameras employ a 1/3" SONY Super HAD CCD II solid-state imaging device which provide superior performance.

These cameras can be easily installed in mostly indoor locations along with its very low current consumption of 80mA or less.

These cameras are not only easy to install but achieve an excellent reliability record.

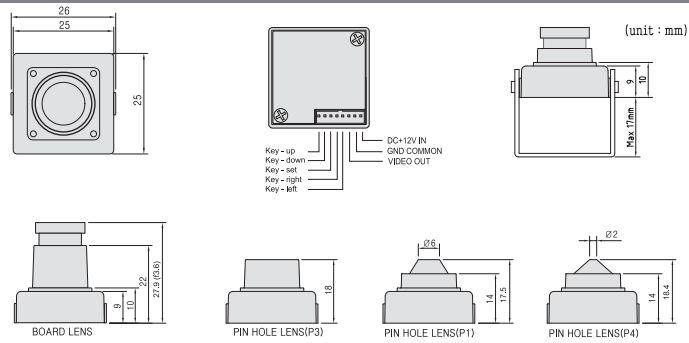
ACCESSORIES FURNISHED

Accessories	Cable	Mounting Bracket	Screw	Instruction Manual	OSD Manual
Q' ty	1	1	4	1	-
Option	-	-	-	-	1

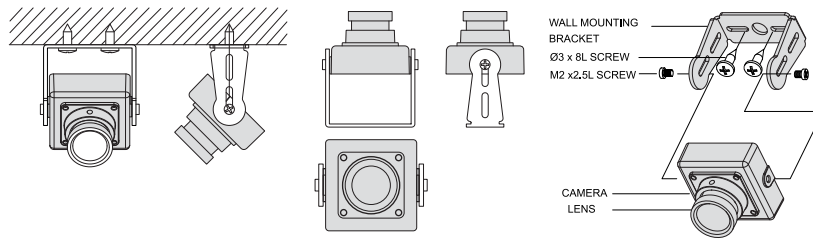
SPECIFICATION

Signal Format	NTSC	PAL
Total Pixels Number	1020(H) x 508(V) 520K	1020(H) x 596(V) 610K
Effective Pixels Number	976(H) x 494(V) 480K	976(H) x 582(V) 570K
Pick-up Device	1/3" 960H Super HAD CCD II (sony)	
Lens Fitted	Board, Pinhole	
Signal Process	Digital Signal Process	
Scanning System	2:1 Interlace	
Sync System	Internal	
Scanning Frequency	59.94Hz (VD)	50Hz (VD)
Horizontal Resolution	700 TV Lines	
S/N Ratio	More than 50dB (AGC Off)	
Video Output	1.0Vpp composite (75 Ω)	
Min. Illumination	0.1Lux @ 30IRE, F2.0	
OSD (Option)	LENS	MANUAL, DC
	SHUTTER /AGC	SHUTTER : SHUT, SHUT+IRIS, IRIS
		AGC : OFF, AGC
	WHITE BALANCE	ATW, PUSH, USER1, USER2, ANTI CR, MANUAL, PUSH LOCK
	BACKLIGHT	OFF, BLC, HLC
	ATR	OFF, ON (Level adjustable)
	NR	OFF, ON (Level adjustable)
	DAYNIGHT	AUTO, COLOR, B/W
	PICT ADJUST	MIRROR, BRIGHTNESS, CONTRAST, SHARPNESS, HUE, GAIN
	MOTION DETECTION	OFF, ON (4 AREAS)
	PRIVACY	OFF, ON (4 AREAS)
CAMERA ID	0~9, A~Z, Special Character	
LANGUAGE	English, Japanese, German, French, Russian, Portuguese, Spanish, Chinese	
Shutter Speed	1/60 ~ 1/100,000 sec	1/50 ~ 1/100,000 sec
Power Consumption	DC12V , Max. 80mA	
Operating Temperature	-10°C ~ 50°C (Humidity : 0% RH ~ 80% RH)	
Storage Temperature	-20°C ~ 60°C (Humidity : 0% RH ~ 85% RH)	
Option	Lens, Cable OSD function, EXview CCD	

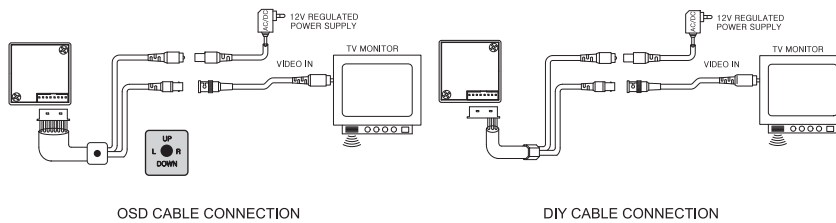
DIMENSIONS



CAMERA MOUNTING POSITIONS



CONNECTIONS



This device complies with Part 15 of the FCC Rules. Operation is subject to the following two conditions;

1. This device may not cause harmful interference.
2. This device must accept any interference received, including interference that may cause undesired operation.

Note - This equipment has been tested and found to comply with limits for a Class A digital device, pursuant to part 15 of the FCC Rules. These limits are designed to provide reasonable protection against harmful interference in a residential installation.

This equipment generates, uses, and can radiate radio communications.

However, there is no guarantee that interference will not occur in a particular installation. If this equipment off and on, the user is encouraged to try to correct the interference by one or more of the following measures :

- Reorient or relocate the receiving antenna
- Increase the separation between the equipment and receiver.
- Connect the equipment into an outlet on a circuit different from that to which the receiver is connected.
- Consult the dealer or an experienced radio / tv technician for help.

Caution - Any changes or modifications in construction of this device which are not expressly approved by the party responsible for compliance could void the user's authority to operate the equipment.

⚠ CAUTION

1. A regulated DC 12V 300mA power supply is recommended for use with this camera for the best picture and the most stable operation.
An unregulated power supply can cause damage to the camera. When unregulated power supply is applied, product warranty will be out of subject.
2. It is recommended that the camera is used with a monitor that has a CCTV quality 75 video impedance level. If your monitor is switched to high impedance then please adjust accordingly.
3. Do not attempt to disassemble the camera to gain access to the internal components.
Refer servicing to your dealer.
4. Never face the camera towards the sun or any bright or reflective light, which may cause smear on the picture and possible damage to the CCD
5. **Do not remove the serial sticker for the warranty service**